

SPIRALCELL TECHNOLOGY®

Spiralcell Technology
for superior vibration
resistance and extended life

**Solid Cast
Cell Connections**
for increased durability
and maximum plate height

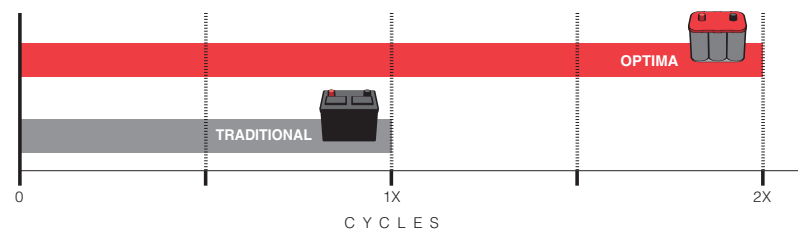
**Tightly
Compressed Cells**
for added vibration resistance



**99.99%
Pure Lead**

Spiralcell design allows
for lead to be used in
its purest form

**Absorbent
Glass-Mat Separators**
holds electrolyte like a sponge
to eliminate acid spilling



Up to 2 times longer life

(when compared to traditional batteries)

Damage from heat is the leading cause of battery failure. Even in high heat environments, OPTIMA batteries can outlast traditional batteries by up to 2 times.



Long shelf life

OPTIMA batteries are ideal for vehicles that are used seasonally because of their low self-discharge rate. All batteries that sit unused for extended periods of time will begin to lose charge. But OPTIMA batteries retain a significantly greater amount of power, enough to start large vehicles like tractors, harvesters, recreational vehicles, and boats even after a long winter of no use.*

*The battery should be fully charged before being disconnected for extended periods of non-use.

YELLOWTOP SPECIFICATIONS

Model Number	Voltage	Cold Cranking Amps @ 0° F	Cranking Amps @ 32° F	Reserve Capacity	Capacity (C/20 Rate)	Internal Resistance (ohms)	Dimensions			Weight (lbs)	Post Type	BCI Group
							Length	Width	Height			
D34/78	12V	750	870	120	55	.0028	10 1/16"	6 15/16"	7 7/8"	43.5	Dual SAE/GM	34/78
D75/25	12V	620	770	100	48	.0030	9 3/8"	6 13/16"	7 3/4"	37.8	Dual SAE/GM	75/25
D34	12V	750	870	120	55	.0028	10 1/16"	6 7/8"	7 7/8"	42.9	SAE Post	34
D35	12V	620	770	100	48	.0030	9 3/8"	6 3/4"	7 11/16"	36.4	SAE Post	35
D51	12V	450	575	66	38	.0046	9 5/16"	5 1/16"	8 15/16"	26	SAE Post	51
D51R	12V	450	575	66	38	.0046	9 5/16"	5 1/16"	8 15/16"	26	SAE Post	51R
D31T	12V	900	1125	155	75	.0025	12 13/16"	6 9/16"	9 3/8"	59.8	3/8" Stainless Steel Stud	31T
D31A	12V	900	1125	155	75	.0025	12 13/16"	6 9/16"	9 3/8"	59.8	SAE Post	31A
D27F	12V	830	1025	140	66	.0025	12 3/16"	6 13/16"	8 3/4"	53.2	SAE Post	27F

WARRANTY INFORMATION

D27F, D34/78, D75/25, D34, D35, D51, D51R Automotive, LTV, Car Audio	36 months free replacement
D31A, D31T Commercial	24 months free replacement
D34/78, D75/25, D34, D35, D51, D51R, D27F in commercial applications	12 months free replacement
Series String Applications with battery management system	12 months
Series String Applications without battery management system	1 month

BLUETOP SPECIFICATIONS

Model Number	Voltage	Cold Cranking Amps @ 0° F	Cranking Amps @ 32° F	Reserve Capacity	Capacity (C/20 Rate)	Internal Resistance (ohms)	Dimensions			Weight (lbs)	Post Type	BCI Group
							Length	Width	Height			
D27M	12V	800	1000	140	66	.0025	12 3/16"	6 13/16"	8 3/4"	53.8	Dual SAE & 5/16" Stainless Stud	27
34M **	12V	800	1000	100	50	.0030	10 1/16"	6 7/8"	7 15/16"	38.4	Dual SAE & 5/16" Stainless Stud	34
D34M **	12V	750	870	120	55	.0028	10 1/16"	6 7/8"	7 15/16"	43.5	Dual SAE & 5/16" Stainless Stud	34
D31M*	12V	900	1125	155	75	.0025	12 13/16"	6 9/16"	9 3/8"	59.8	Dual SAE & 5/16" Stainless Stud	31

WARRANTY INFORMATION

All BlueTop starting and deep cycle batteries	24 months free replacement
D27M, 34M, D34M, D31M in commercial applications	12 months free replacement
Series String Applications with battery management system (deep cycle only)	12 months
Series String Applications without battery management system (deep cycle only)	1 month
Use of 34M starting battery in abusive service / deep cycle applications / car audio	Not covered

*D31M model fits group size 27 marine boxes and trays **34M and D34M models fit group size 24 marine boxes and trays

REDTOP SPECIFICATIONS

Model Number	Voltage	Cold Cranking Amps @ 0° F	Cranking Amps @ 32° F	Reserve Capacity	Capacity (C/20 Rate)	Internal Resistance (ohms)	Dimensions			Weight (lbs)	Post Type	BCI Group
							Length	Width	Height			
34/78	12V	800	1000	100	50	.0030	10 1/16"	6 15/16"	7 7/8"	38.8	Dual SAE/GM	34/78
75/25	12V	720	910	90	44	.0030	9 3/8"	6 13/16"	7 3/4"	33.1	Dual SAE/GM	75/25
25	12V	720	910	90	44	.0030	9 3/8"	6 3/4"	7 11/16"	31.7	SAE Post	25
34	12V	800	1000	100	50	.0030	10 1/16"	6 7/8"	7 7/8"	37.9	SAE Post	34
34R	12V	800	1000	100	50	.0030	10 1/16"	6 7/8"	7 7/8"	37.9	SAE Post	34R
35	12V	720	910	90	44	.0030	9 3/8"	6 3/4"	7 11/16"	31.7	SAE Post	35
78	12V	800	1000	100	50	.0030	10 1/16"	7 5/16"	7 1/4"	39.5	Side Terminal	78
6V	6V	800	1000	100	50	.0019	10 1/16"	3 5/8"	8 1/8"	18.5	SAE Post	N/A

WARRANTY INFORMATION

6V and 12V Passenger vehicle / light truck (non commercial)	36 months free replacement
Commercial	12 months free replacement
Abusive service / deep cycle applications / car audio	Not covered



OPTIMA Batteries, Inc. 5757 N. Green Bay Ave. Milwaukee, WI 53209
 Dealer Inquiries Phone: 1-800-292-4359 Fax: 1-866-396-3137 E-mail: sales@optimabatteries.com
©OPTIMA BATTERIES. The Ultimate Power Source, Spiralcell Technology, RedTop, BlueTop and YellowTop are trademarks of Johnson Controls, Inc.

THE ULTIMATE POWER SOURCE™





YellowTop®

Deep cycle and starting batteries for extreme applications

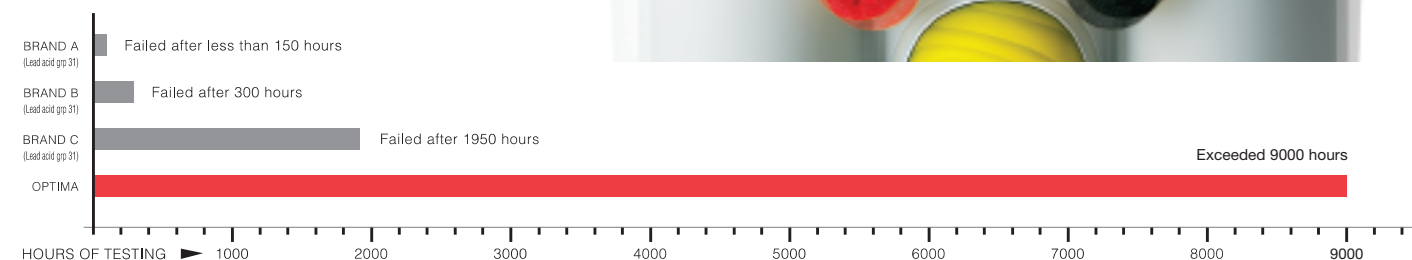
OPTIMA® YellowTop® batteries are made for the extremes. Whether your vehicle is designed to take the abuse of the off-road or crank out decibels, you need more from your battery. OPTIMA batteries with patented Spiralcell Technology® fulfill these needs. The deep cycle characteristic of this technology coupled with its extreme resistance to vibration provides performance vehicles with the repetitive power they need in a spill-proof package.

If your vehicle has a lot of accessories like running lights, winches, hydraulics, or a high-performance stereo/AV system it demands more from its battery. OPTIMA YellowTop batteries provide the extra performance and cycling capability that your vehicle demands.



SHAKE IT UP!

Damage from vibration is a leading cause of battery failure. OPTIMA batteries have over **15 times more vibration resistance** than traditional batteries due to patented Spiralcell Technology.



BlueTop®

Some days, endurance is more important than luck

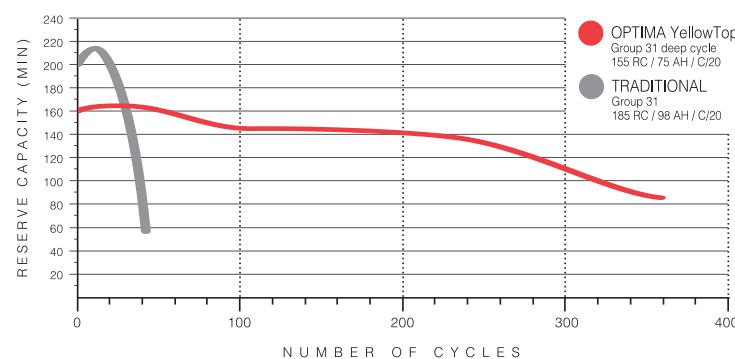
An OPTIMA® BlueTop® battery will keep you on the water longer. Its patented Spiralcell Technology® means more running time, faster recharge, and up to twice the life of traditional marine and RV batteries. Plus, it's spill-proof, can be stored longer, and has 15 times the vibration resistance, not to mention superior heat resistance.

If your boat has a lot of accessories such as lights, fish finder, trolling motor, radar, high-performance stereo, bilge pumps or chart plotter it demands more from its battery. OPTIMA BlueTop deep cycle batteries provide the cycling ability your boat demands while maintaining the cranking ability it needs. When you use an OPTIMA BlueTop battery, you don't need luck! Look for its colored top and six-pack shape at your local battery dealer.



Repetitive reserve capacity

OPTIMA batteries have the ability to withstand significantly more discharge/recharge cycles and still deliver a high percentage of the original full capacity.



RedTop®

A starting battery with performance power

The looks alone generate plenty of buzz. But it's the patented Spiralcell Technology® in OPTIMA® RedTop® batteries that's truly worthy of praise.

Trucks, SUV's, and 4x4's. OPTIMA RedTop batteries are built to withstand the abuse these vehicles experience on and off-road. Spiralcell Technology immobilizes the internal components of the battery, enabling OPTIMA batteries to withstand incredible amounts of vibration.

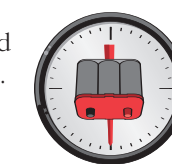
Performance vehicles. OPTIMA batteries can withstand the high under-hood temperatures in vehicles with performance engines. The sealed cells make the battery spill-proof, even if you install it on its side!



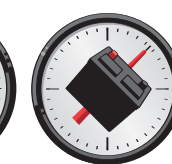
CAUTION

Don't try this with any other battery

Traditional batteries will spill acid after a rotation of 45°. OPTIMA batteries can be **rotated up to 180°** with no acid spill. That's because they're sealed and maintenance free.



OPTIMA
No spill at 180°



TRADITIONAL
No spill at 45°

More starting power

OPTIMA batteries deliver a higher level of power to the starter in the critical first 10 seconds of the vehicle starting cycle.

